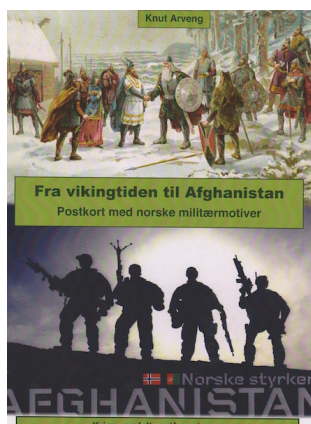


Library Acquisitions

Following are a few recent additions to the SCC Library. These and the entire library collection are available to SCC members. Check the library's extensive (and growing) catalog by clicking on [Library Resources](#). For further information and to borrow materials email albrightsp@gmail.com.

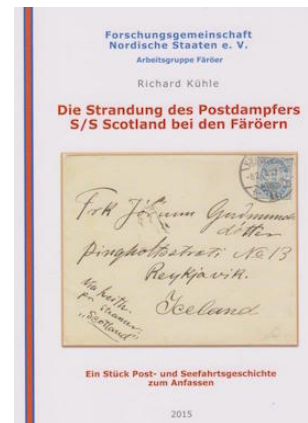


From the Age of Vikings to Afghanistan: Postcards with Norwegian Military Themes.

Picture postcards depicting Norwegian military themes from the age of the Vikings to current times.

Stockholm Relief Societies and Faroese Shipwreck.

Military and postal historians may be interested in two recent German-language books (titles translated): The Foreign Relief Societies in Stockholm during the First World War, and The Wreck of the S.S. Scotland Steamship in the Faroe Islands.



Mailboats Lost: 1691-1907

Details the loss of more than 80 open mail boats that crashed along the Norwegian coast in the 18th and 19th centuries. Especially useful for those seeking to identify salvaged mail.

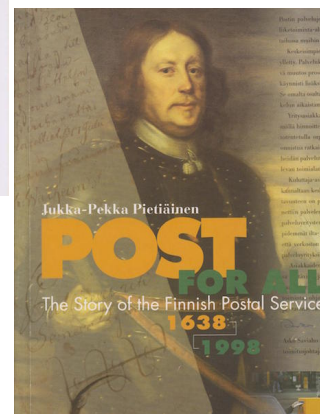


Post for All: The Story of the Finnish Postal Service, 1638-1998.

A 360-year history of the Finnish Post.

Handbook of Finnish Postmarks, Vol. VIII, Message Cancellations.

Compilation of 1920s-1980s machine cancels with text and pictorial messages.

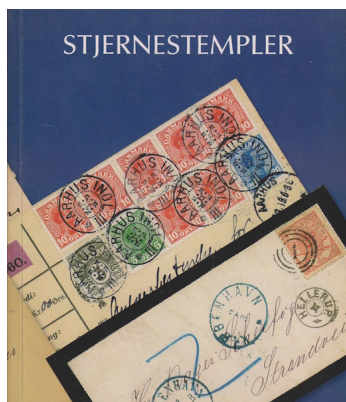


Event and Pictorial Postmarks of Finland, Vol. II.

Illustrated listings of tourist, pictorial, and special occasion postal cancellations of Finland from 1920-1982.

Star Postmarks (Stjernestempler).

Priced catalog of concentric circle, star, and star-removed Danish postmarks.



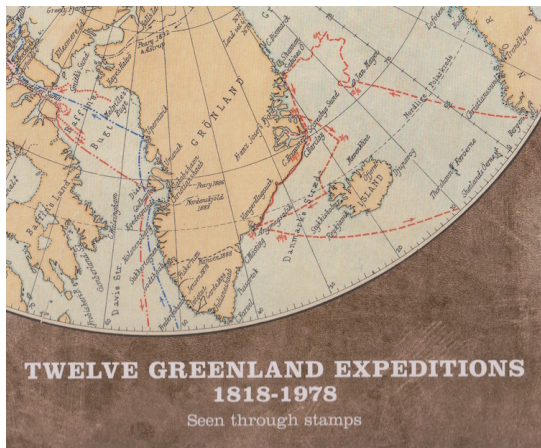
The Foreign Relief Society in Stockholm during the First World War.

The postal history of the German Foreign Relief Society formed in Stockholm in 1862 and seeing its operations increase dramatically in World War I. Illustrations include mail concerning prisoners of war and internees in Russia.

The Stamps of the Danish West Indies.

Although published in 1930, this study of DWI #1 and 2 (and subsequent reprints) was just acquired by the SCC Library.

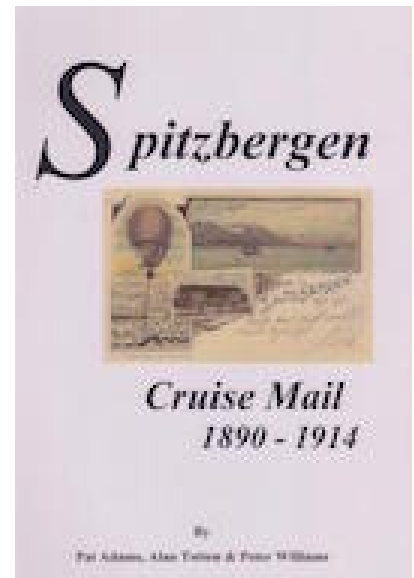
Twelve Greenland Expeditions, 1818-1878, Seen Through Stamps Issued 2003-2014.



Historical accounts of the 12 expeditions featured on Greenland's Expedition series of souvenir sheets issued annually between 2003-2014.

Spitzbergen Cruise Mail, 1890-1914.

Highlights cruise mail, stamps and locals of Svalbard, descriptions of postal facilities, and cachets used by shipping companies.



Don Halpern Exhibit Pages.

Exhibit pages compiled by the late Don Halpern illustrating Danish, Norwegian, and Swedish covers from 1658 to 1857 primarily to foreign destinations. Included are post office routings, private ship mail, and Thurn & Taxis routings.



Icelandic numeral cancels: 1903-1960.

The second volume of a study on the usage of Iceland's numeral cancels numbered 174-300. The previous book (also in the SCC Library) covered cancels numbered 1-173.

By Mörck.

Chronicles the life, career, and work of master engraver Martin Mörck who has designed and engraved numerous postage stamps for Scandinavian countries and other non-Scandinavian countries as well.

Tabellarius 17 (2016).

A variety of articles of interest to Finnish philatelists in the annual yearbook from the Finnish Post Museum and the Friends of the Post Museum Association. Swedish text summary follows each article.

Scandinavia-related exhibits.

Recent acquisitions include "Denmark: The Christian X Issues of the 1940s on First Day Covers," by Alan Warren; "The Finnish Railway to St. Petersburg, 1870-1918," by Roger Quinby, and a printed copy of the late Don Halpern's extensive exhibit pages on "Scandinavian Foreign Mail."

Price Catalogue of Norwegian Machine Cancellations, 1904-2004

A century of machine cancel listings that evolved from registration cancels into a variety of place, slogan, pictorial, and duplex machine postmarks.

The Postal Travel Service, 1838-1991.

Accounts of life aboard mail trains and ferries in Norway, including the sorting of mail en route to the destination.

